



**SCANVEC
AMIABLE**

Mutoh Cut Server 1.0 User Manual

Scanvec Amiable, Inc.
2 International Plaza, Suite 625
Philadelphia, PA 19113-1518
USA
610-521-6300
www.scanvecamiable.com

Contents

Introduction	2
Installation	2
Getting Started	3
Basic Elements of the Software	3
Toolbar	3
Communication Status	3
Setup	4
Setting the Jobs Directory	4
Configuring Cut Server Settings	4
Configuring Your Design Application	5
Outputting Jobs Using Cut Server	6
Designing Jobs for Cut Server Output	6
Outputting the Printed Portion of the Jobs	6
Printing Multiple Jobs on One Sheet or Roll of Media....	6
Outputting the Contour Cut Portion of the Jobs	6
Cutting Multiple Jobs on One Sheet or Roll of Media....	6
Sending the Cut Jobs from Cut Server	7
Deleting Jobs from the Job Queue	7

Introduction

The Cut Server application allows you to cut contours on printed materials that have been output using the correct registration marks.

The contours output by Cut Server are contained in PLT files generated by another application.

To use Cut Server, carry out the following steps:

1. Install Cut Server.
2. Set up Cut Server.
3. Output the printed materials and load them into your cutter.
4. Output the contour cuts from your design application.
5. Output the contour cuts from Cut Server.

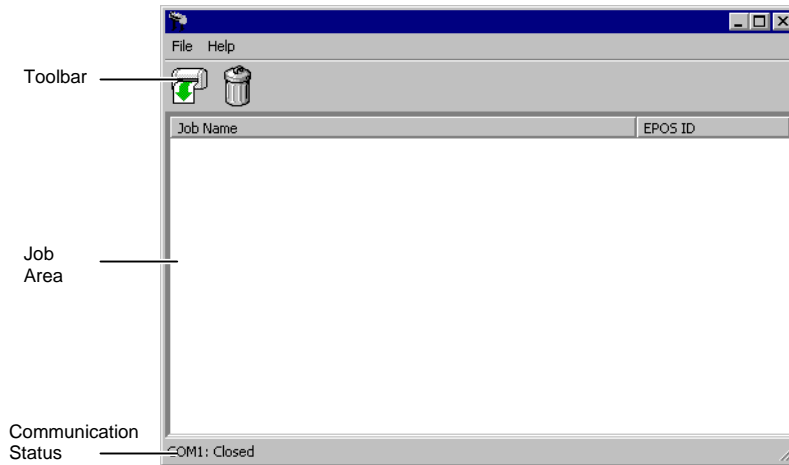
Installation

To install Cut Server, copy the files and Jobs folder into a folder on the computer that is connected to your cutter.

Getting Started

Basic Elements of the Software

The following are some of the basic elements of your software:



Toolbar

A toolbar is located at the top of the main window. It contains tools for the most commonly used functions.

The toolbar functions are:



Send

Outputs contour cut jobs that match the barcodes on the printed media.



Delete

Deletes the selected job or jobs.

Communication Status

The current status of the communication port is listed in the status bar at the bottom of the main window.

Setup

The following setup tasks should be done before outputting jobs from the design application.

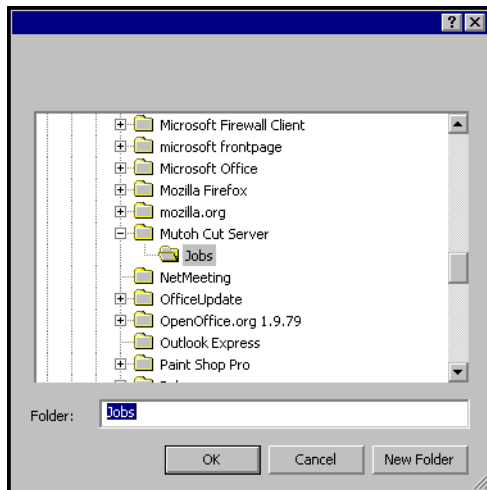
Setting the Jobs Directory

The Jobs directory is a folder on your computer where Cut Server stores its job files.

The default Jobs directory is the Jobs folder in the Cut Server application folder. It can be set to any folder on your computer, however.

To set the location of the Jobs directory:

1. In the Cut Server application, from the **File** menu select **Set Directory**.

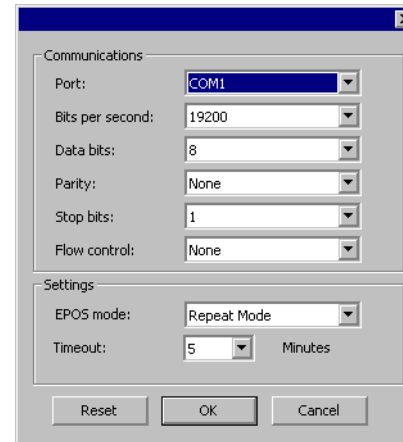


2. To create a new folder, click **New Folder**.
3. Select the folder that will be used as the Jobs directory.
4. Click **OK**.

Configuring Cut Server Settings

To configure the application preferences for Cut Server:

1. From the **File** menu, select **Settings**.

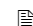


2. Set the **Communications** settings to match your output device.
3. Set **EPOS mode** to match the way the printed media will be output:

Single Scan Only one job will be printed on each sheet or roll of media.

Repeat Mode More than one job will be printed on each sheet or roll of media.

4. Set **Timeout** to the number of minutes that Cut Server should wait to receive a new barcode from the cutter before closing the communications port.

 The communications port will remain open for this length of time every time you send jobs to the cutter.

5. Click **Reset** to return the settings to their defaults.
6. Click **OK** when finished.

Configuring Your Design Application

When configuring your design application to output to Cut Server, do the following:

1. Create a setup for your printer.
2. Create a setup for Cut Server in Production Manager.
 - a. Select **Vinyl cutter** as the type of device.
 - b. Select the manufacturer and model of cutter you will be using with Cut Server.
 - c. Set the communications port to **File**, and set the **Default location** to the Jobs directory.

Outputting Jobs Using Cut Server

Outputting jobs from Cut Server requires the following steps:

1. Create the jobs in your design application.
2. Output the printed materials and loading them into your cutter.
3. Output the contour cuts from your design application.
4. Send the cut jobs from Cut Server.

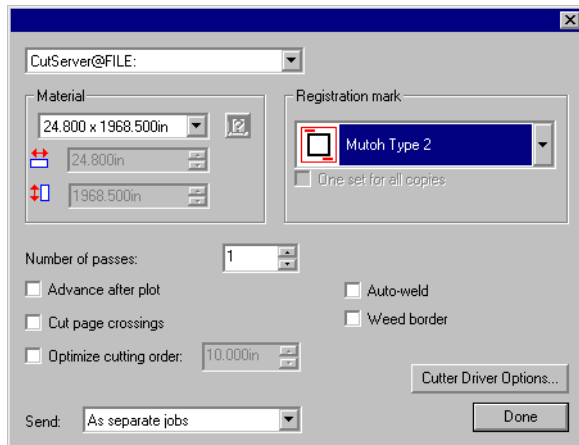
Designing Jobs for Cut Server Output

When you design jobs to be output using Cut Server, the contour cut paths must be specified using the Contour effect, or by converting objects into contours. That way, when the job is output, the design application can separate the printed portion of the job from the contour cuts, and send each to the proper device for output.

Outputting the Printed Portion of the Jobs

To output the printed portion of a job:

1. Open the job in the Rip and Print dialog.
2. Select the Advanced tab and click **Contour**.



3. Select the output device setup you created for Cut Server.
4. Select the **Mutoh Type 2** or **Mutoh Multiple Segments** registration mark.
 - ☰ Selecting **Mutoh Multiple Segments** automatically sets the number of segments so that no segment is larger than 50cm. To use only one segment, select **Mutoh Type 2**.
5. Click **Done**.
6. Select any other desired settings then click **Send**.
7. Load the printed output into your cutter.

☰ If a printed job is loaded into the cutter backwards, Cut Server will detect it, and will automatically rotate the cut job 180 degrees to match.

Printing Multiple Jobs on One Sheet or Roll of Media

More than one job can be output on a single sheet or roll of media. Simply output the jobs one after another. Each job will be marked with a barcode that will identify which contour cut job Cut Server should use with that design.

Outputting the Contour Cut Portion of the Jobs

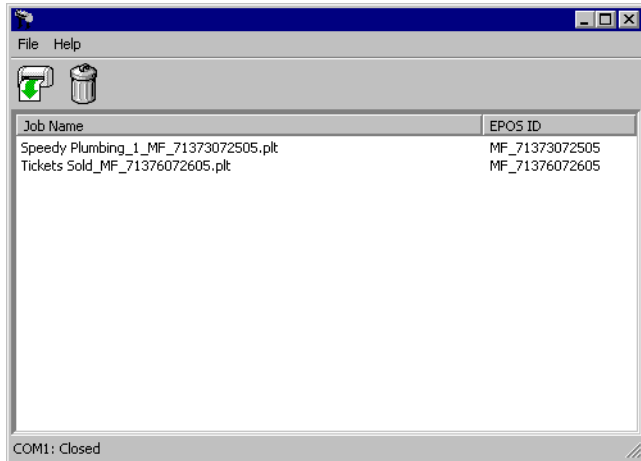
When the printed portions of a job are output, the contour cut job that corresponds to the printed job is automatically created and queued up in Production Manager. Select the cut job in Production Manager and click **Send**.


Cutting Multiple Jobs on One Sheet or Roll of Media

When multiple jobs have been printed on a single sheet or roll of media, multiple cut jobs will be queued up in Production Manager. Select the jobs in Production Manager and click **Send**. It does not matter what order you send the jobs in.

Sending the Cut Jobs from Cut Server

Once the contour cut jobs are sent from Production Manager, they will appear in the job queue in Cut Server.




Once the cut jobs appear in the job queue, and the printed output is loaded into the cutter, click **Send**. 

The cutter will search for barcodes in the printed output, and will report the barcodes it finds to Cut Server. Cut Server will then output the cut jobs that correspond to the barcodes, cutting the contours on the printed jobs.

After cutting, the cut jobs remain in the job queue.

Deleting Jobs from the Job Queue

To delete a cut job from the job queue:

- Select the file in the job queue and click **Delete**. 
- Delete the PLT file from the job directory manually.