

How to Print and Cut using Auto Sensing

for use only with:
MUTOH
 SC 850 D & 1400 D
 Cutters and any
 Printers

Step by Step Guide

From FlexiSIGN PRO and PhotoPRINT DX:

1. Open your image or Create your image: File > Open or File > New
2. Apply Contour Cut: Effects > Contour Cut (Fig.1a - 1b)



Fig.1a

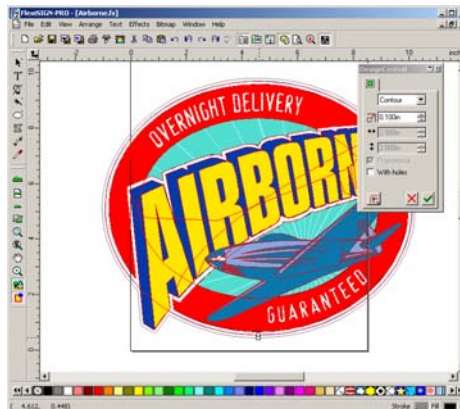


Fig.1b



3. Select Rip and Print Dialogue: File > RIP & Print
4. Select Printer for output: See Fig. 2a

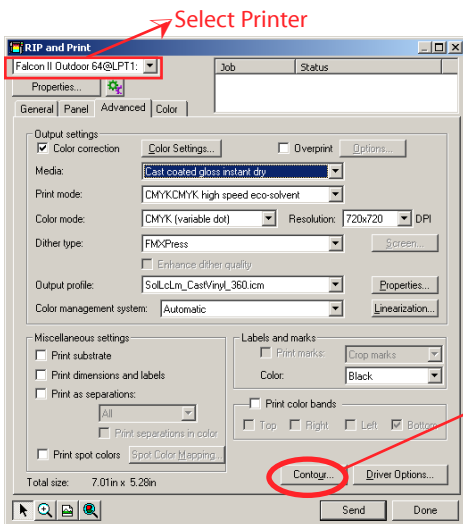


Fig.2a

5. Click the Contour Button and select Cutter: See Fig. 2b
6. Select marks for Out put : Choose Mutoh

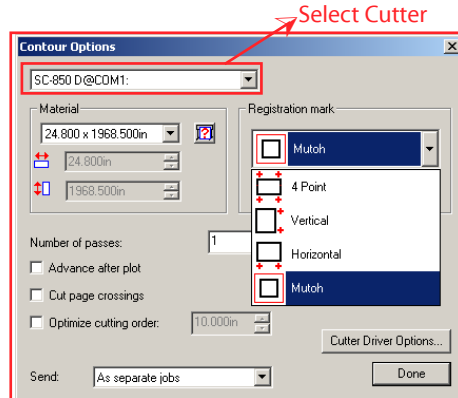


Fig.2b

7. Click "Send" this will separately send the files to RIP & Print, plus it will send the CUT Job, to be placed on Hold until you are ready to have it contoured and cut.

Software Solutions for Print and Cut:

- FlexiSIGN PRO
- PhotoPRINT DX
- PhotoPRINT SERVER
- PhotoPRINT SERVER-PRO w/EDITOR

Other side has detailed instruction on how to setup the Cutter ➡



International Plaza Two, Suite 625
 Philadelphia, PA 19113 USA
 Toll Free: 800.229.9068
 Tel: 610.521.6300
 Fax: 610.521.0111



How to Print and Cut using Auto Sensing

for use only with:

MUTOH

SC 850 D & 1400 D
Cutters and any
Printers

Step by Step Guide

From PhotoPRINT SERVER OR SERVER-PRO:

1. Open your image : File > ADD JOD
2. Check to make sure image was prepare for contour cutting by double-clicking on Color Mapping Button. Custom color name for Contour line must be: "CutContour" (Fig 1)

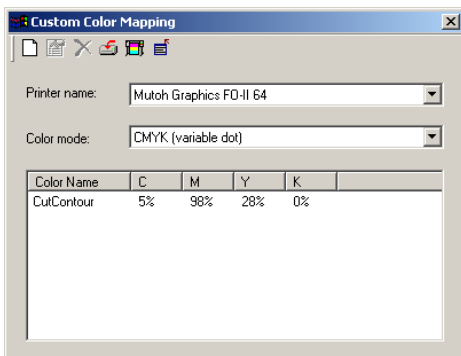


Fig.1

3. Select Workflow Tab to select the Correct Cutter (Fig 2)

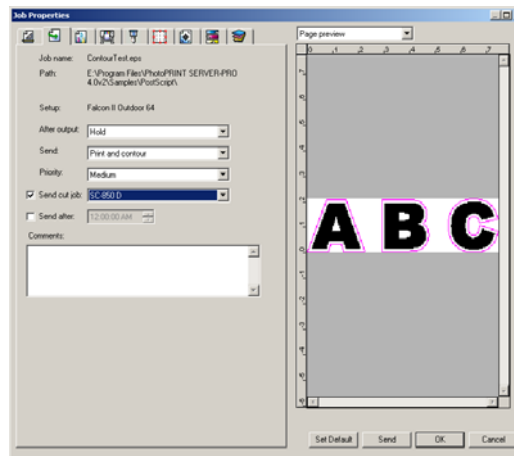


Fig.2



4. Select the Labels tab to choose which Cut marks best fits your cutting scenario. there are 2: Mutoh Mark (Fig 3)

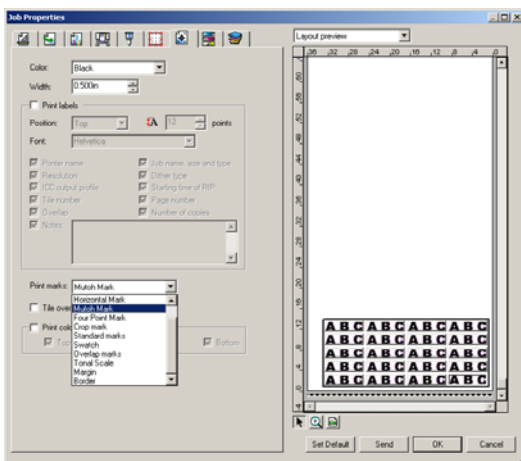
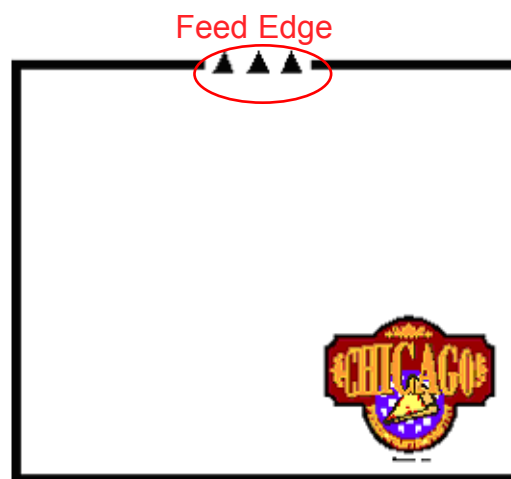


Fig.3



5. Click "Send" this will separately send the files to RIP & Print, plus it will send the CUT Job, to be placed on Hold until you are ready to have it contoured and cut.

Other side has detailed instruction on how to setup the Cutter ➔



International Plaza Two, Suite 625
Philadelphia, PA 19113 USA
Toll Free: 800.229.9068
Tel: 610.521.6300
Fax: 610.521.0111



Software Solutions for Print and Cut:

- FlexiSIGN PRO
- PhotoPRINT DX
- PhotoPRINT SERVER
- PhotoPRINT SERVER-PRO w/EDITOR

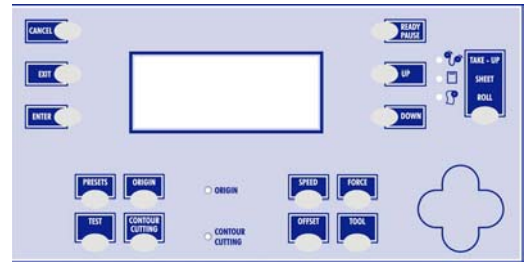
Mutoh Ultima Tech Notes

2 Models:

Mutoh SC- 850D

Mutoh SC- 1400D

First Version of Scanvec Amiable software to support these devices:
FlexiSIGN Pro 7.5v2 and PhotoPRINT DX,SERVER,SERVER-PRO 4.0v2 Build #562



Requirements: Need to install the USB driver Ultima to use this device.

Once the USB is installed, check your windows device manager to see which port has been assigned the USB. Engineers claim it will use "Com 3" for the USB port but it can also use "COM 4 "

USB Drivers are supported by Windows 2K and XP

Mutoh Registration for the Ultima Cutters (Figure A) :

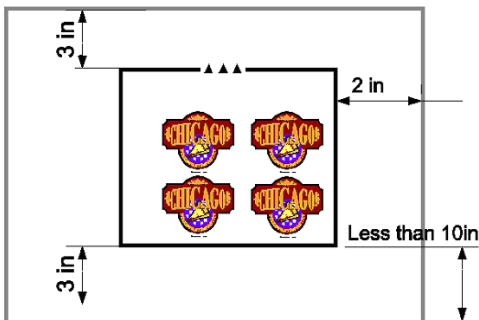


Description: It is a Black border surrounding the contour design. There are 3 arrows at the top of the border indicating the direction for front-loading into the cutter.

Specification: The required height of the Mutoh Registration is roughly 12 inches at its smallest size. If your design exceeds 12 inches in height, the registration will grow to encompass the size of your design. The 12 inches is required for the cutter's alignment process. (See Figure A)

Cutting Rules and regulations:

Proper Offsets for cutting (Figure B) :



Less than 10 inches required for proper detection-The cutter will automatically advance 10 inches (From the front edge of your media) to search for the Mutoh Registration. If it does not detect the black border, it will start cutting at the bottom of the paper. This issue is logged as Bug # 51962. Make sure that the Mutoh registration is less than 10 inches away from the front of your media so that the cutter will detect the border. Following these steps will avoid the non-detection problem. (See lower right hand corner of figure B)

Horizontal offset for Optimum Cutting: When sending your design from RIP and Print or PhotoPRINT Server. It is recommended that you specify a Right and Left Horizontal offset of at least 2 inches. The Cutter cannot detect the Registration beyond the right side of its pinch roller. (See upper right hand corner of Figure B)

Top and Bottom Vertical offset for Optimum Cutting: When sending your design from RIP and Print or PhotoPRINT Server. It is recommended that you specify a top and bottom vertical offset of at least 3 inches. (See upper and lower left hand corner of Figure B)

Sending the Cut Job: There is no need to push any buttons on the cutter. Turn the cutter on, load the media using the arrows for front loading direction. Send the cut job from Production Manager or PhotoPRINT Server. If the proper offsets are used, the cutter will detect all the edges and cut your contour.