



Toucan LT Ink Cost Study

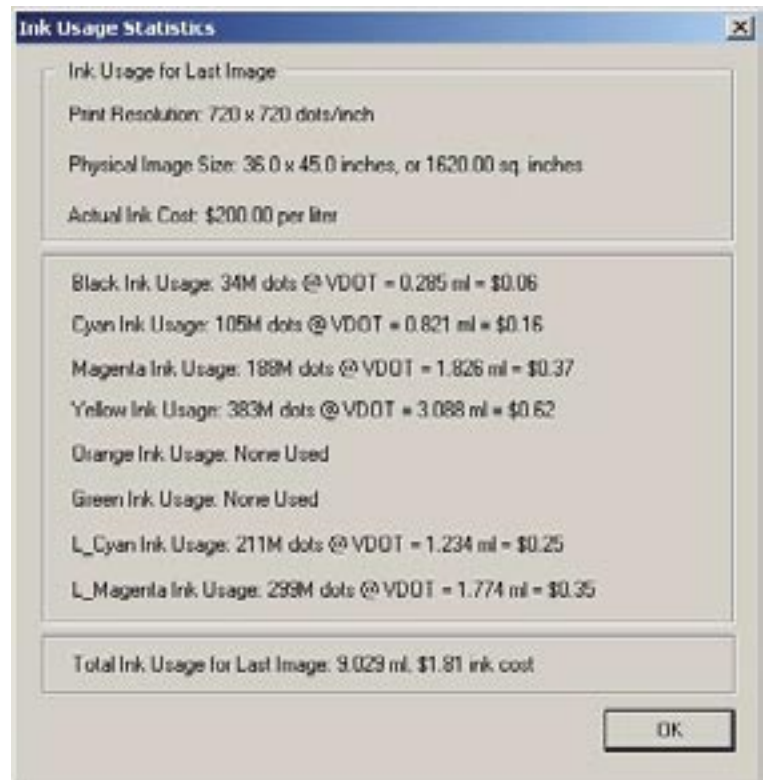
Printer: Toucan LT with LT-Solvent KCMYlcm

Resolution: 720x720 (uni,bi,2pass and 4pass have no effect on cost)

Media: Avery 2010

Software: ISIS PM 1.10

Image Size: 36x45; 11.25sqft



$$36 \times 45 = 1620 / 144 = 11.25 \text{ sqft}$$
$$\$1.81 / 11.25 = 0.16\text{¢ per sqft}$$



Toucan LT Ink Cost Study

Printer: Toucan LT with LT-Solvent KCMYlcm

Resolution: 720x720 (uni,bi,2pass and 4pass have no effect on cost)

Media: Avery 2010

Software: ISIS PM 1.10

Image Size: 36x45; 11.25sqft



Ink Usage Statistics

Ink Usage for Last Image
Print Resolution: 720 x 720 dots/inch
Physical Image Size: 45.0 x 36.0 inches, or 1620.00 sq. inches
Actual Ink Cost: \$200.00 per liter

Black Ink Usage: 34M dots @ VDOT = 0.280 ml = \$0.06
Cyan Ink Usage: 449M dots @ VDOT = 4.246 ml = \$0.85
Magenta Ink Usage: 556M dots @ VDOT = 5.291 ml = \$1.06
Yellow Ink Usage: 646M dots @ VDOT = 4.354 ml = \$0.87
Orange Ink Usage: None Used
Green Ink Usage: None Used
L_Cyan Ink Usage: 151M dots @ VDOT = 0.885 ml = \$0.18
L_Magenta Ink Usage: 211M dots @ VDOT = 1.274 ml = \$0.25

Total Ink Usage for Last Image: 16.332 ml, \$3.27 ink cost

OK

$$36 \times 45 = 1620 / 144 = 11.25 \text{ sqft}$$
$$\$3.27 / 11.25 = 0.29\text{¢ per sqft}$$



Toucan LT Ink Cost Study

Printer: Toucan LT with LT-Solvent KCMYlcm

Resolution: 720x720 (uni,bi,2pass and 4pass have no effect on cost)

Media: Avery 2010

Software: ISIS PM 1.10

Image Size: 36x45; 11.25sqft



Ink Usage Statistics

Ink Usage for Last Image
Print Resolution: 720 x 720 dots/inch
Physical Image Size: 45.0 x 36.0 inches, or 1620.00 sq. inches
Actual Ink Cost: \$200.00 per liter

Black Ink Usage: 13M dots @ VDOT = 0.090 ml = \$0.02
Cyan Ink Usage: 298M dots @ VDOT = 2.284 ml = \$0.46
Magenta Ink Usage: 609M dots @ VDOT = 7.439 ml = \$1.49
Yellow Ink Usage: 754M dots @ VDOT = 7.113 ml = \$1.42
Orange Ink Usage: None Used
Green Ink Usage: None Used
L_Cyan Ink Usage: 276M dots @ VDOT = 1.646 ml = \$0.33
L_Magenta Ink Usage: 198M dots @ VDOT = 1.241 ml = \$0.25

Total Ink Usage for Last Image: 19.812 ml, \$3.96 ink cost

OK

$$36 \times 45 = 1620 / 144 = 11.25 \text{ sqft}$$
$$\$3.96 / 11.25 = 0.35\text{¢ per sqft}$$